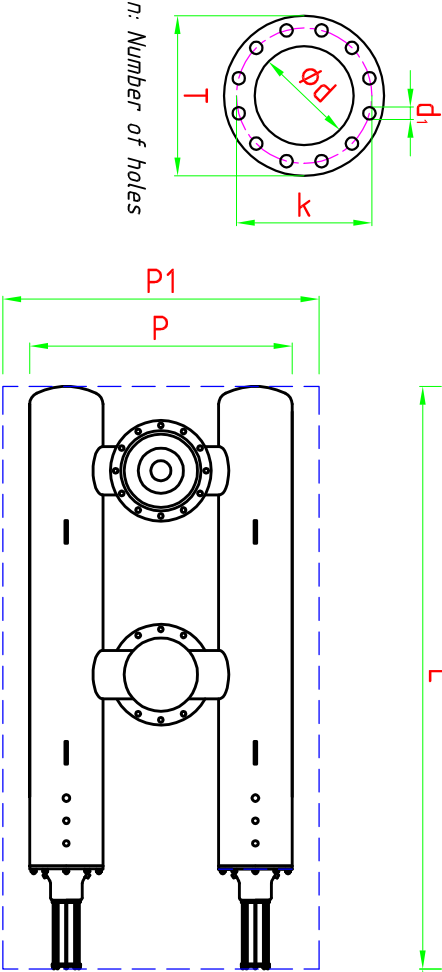
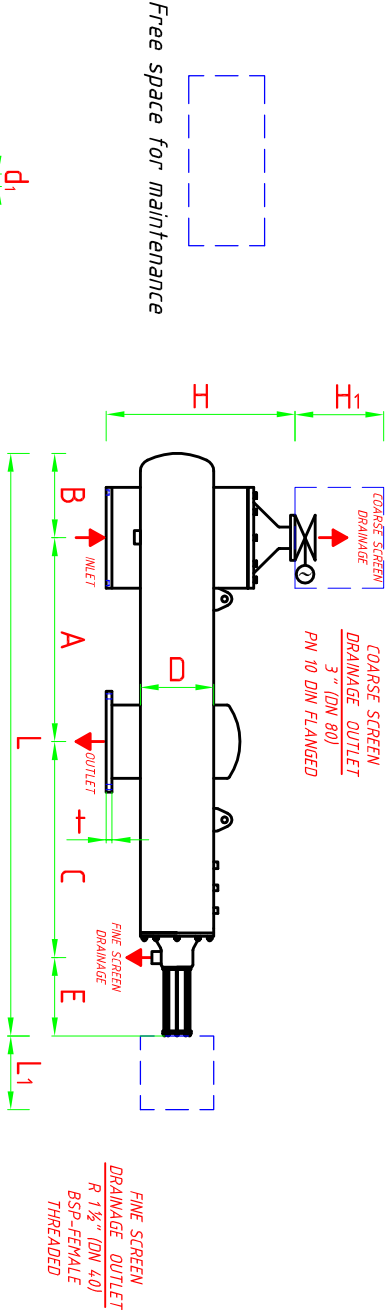


FILTERNOX KATAMARAN 412408 FILTER LAYOUT AND DIMENSIONS



Body Material:		AISI 304
Screen Material:		AISI 316
Max. Operating Pressure:		10 bar
Min. Inlet Pressure Required During back-flush:		2 bar
Max. Operating Temperature:		55 °C
Pressure Loss at Max. Flow Rate:		0.2 bar
Approximate back-flush Time:		4.0-6.0 sec. max.
Approximate back-flush Water Consumption:		300-400 l/back-flush
Coarse Screen back-flush Outlet:		Automatic valve
Fine Screen Control System:		Hydraulic or Electrical
Coarse Screen Control System:		Timer

For high pressure, high temperature and different materials, custom made filters can be produced.

INLET/OUTLET		FLANGE SIZES ND 10 - DN 2576							A		L	L1	B	C	E	D	H	H1	P	P1	WEIGHT(kg)		MAX. FLOW RATE	SCREEN AREA
inch	mm	d	T	k	d1	n	t														FULL	EMPTY	m³/h	cm²
8	200	219.1	34.0	29.5	22	8	24		900	2010	1300	286	486	338	12"	677	865	1225	2025		630	260	380	8700

Inlet and Coarse Screen drainage directions can be used both ways for 8" IDN 200 and wider inlet-outlet diameter filters.
All dimensions are in millimeters.

Antel-Filternox reserves the rights to modify any of the technical information in this document without prior notification.